

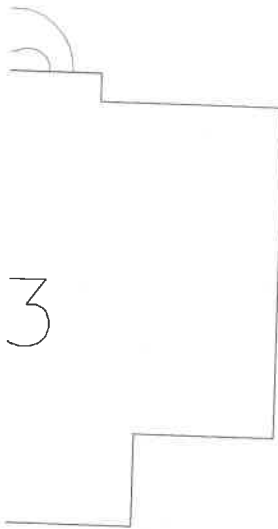
615 EUCLID AVE.

EUCLID AVE.

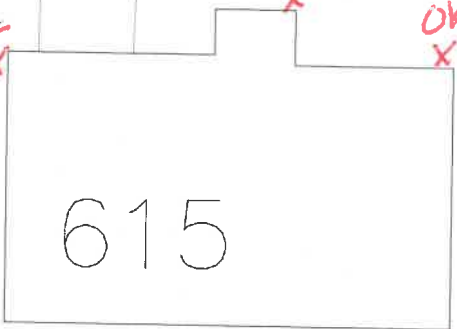
4" Stm.

8" W.M.

24" Stm.



3



615

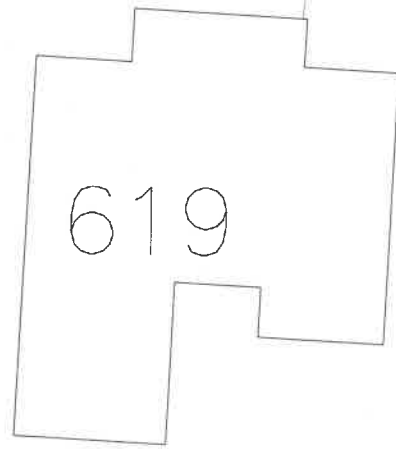
OK
X

X OK

OK
X

X

CAPPED &
COVERED
w/CONC.



619

4-20-15
INSP. MARK SPIESS
ILLEGAL DOWN SPOUT
CONNECTIONS

1"=20'

